

★ Party Guide & Price List ★



You need it? We rent it!

20934 I-45 North
Spring, Texas 77373
(next to Splashtown)

Showroom 281-651-6666

Fax 281-288-3923

*Come visit our showroom to see the
many items we have to offer!*

American Rent-all

Your Rental

HEADQUARTERS

For All Occasions

Business ★ Personal

Corporate Functions

Children Parties

Call Today and

Let Us Help You

Plan The Next

Event For You!

20934 I-45 North
Spring, TX 77373

281/651-6666

281/288-3923 fax

www.americanrent-all.com

RENTAL TERMS & POLICIES

You need it? We rent it!
American Rent-All
is your
Party / Wedding / Corporate
Headquarters

RATES

Prices quoted are for a (1) day charge. Long term rates must be arranged in advance. **Rental Rates are based on time out, whether used or not.** To avoid additional charges, rentals are due back Monday mornings by 10:00 a.m., unless other arrangements are made. *There is an additional 12% damage waiver on all rentals.*

DAMAGE WAIVER

Damage waivers are required on all rentals. This covers some breakdowns of equipment during rentals (circumstances to be reviewed by management.) Will not cover abuse, theft, or loss of items.

RESERVATIONS

Advance reservations are recommended. We require 1/2 (50%) of the rental be paid to guarantee reservation and the balance to be paid in full (7 days) prior to your event. Advanced rental charges are not refundable unless cancellation notice is received (1) week prior to date of event.

SECURITY DEPOSITS

Security Deposits are required on all rented items.

DELIVERY / PICK UP

Delivery and pick up are available at a nominal fee. Delivery charges quoted are for ground level deliveries to your door.

ALL rental items should be together in a single location for pick up. Tables and chairs need to be broken down and stacked ready for pick up. Items not meeting these conditions are subject to additional fees.

RETURN OF RENTAL ITEMS

All china, glassware, silver, and stemware must be returned rinsed or cleaned in the containers provided to avoid additional charges. Be sure to take time & count items with our representative. We will charge for missing items.

Linens should be returned refuse free. Avoid wax and do not put in plastic bags over the weekend to avoid mildew.

Please return moonwalks clean! When it rains do NOT use moonwalks. Cover the motors! And fold moonwalk over (in 1/2) to protect from dirt and water.

LOSS OR DAMAGE

Responsibility for rental equipment remains with the customer from the time of pick-up to time of return. **Please be sure the equipment is protected from the weather and secured when not in use. Exposure to the elements will incur additional charges.**

_____ Customer to initial

_____ ARA Representative



INDEX

Wedding Equipment & Accessories	4
Candelabras	4-5
Arches	6
Gazebos	6
Roman Columns	7
Registry Stands	7
Floral / Silk Arrangements	8-9
Wedding Accessories	9
Kneeling Benches	9
Lattice	10
Centerpieces	10
Tables & Chairs	11
Linens & Skirting	12
Chair Covers	12
Dinnerware	13
China	13
Glassware	13
Flatware	13
Trays	13
Cake Trays / Stands	14
Beverage	14
Fountains	14
Punch Bowls	15
Coffee / Tea Maker	15
Food Warmers	15
Heating & Cooking Equipment	16
Canopies & Tents	17
Tent Lighting	18
Heaters & Coolers	18
Seating Planner	19
Dance Floor & Staging	20
Portable Bars	20
Equipment	21
Audio / Visual	21
Equipment Miscellaneous	21
Concession Equipment	21
Concession Supplies / Merchandise	22
Miscellaneous Party & Carnival	23
Moonwalks / Jumpers	23
Bubble Machine	23
Karaoke	23
Carnival Games	23
Dunk Tank	23

WEDDING EQUIPMENT & ACCESSORIES



Note: Ask about our Specially Packaged Candelabra Displays w/Floral Decorations. (Absolutely Beautiful)

Pictures are available.

CANDELABRAS

**Prices excludes dripless mechanical candles*

BRASS

Candles Dripless Mechanical 15" & 8"	1.00 ea.
1 Light, Aisle Marker, Self Standing	10.50
3 Light, Unity (Customer to purchase Unity Candle)	15.00
7 Light, Adjustable Arm	25.00
9 Light, Adjustable Arm	30.00
9 Light, Tree	30.00
9 Light, Tree w/glass globes	40.00
10 Light, Extension to Crescent	18.00
15 Light, Spiral	40.00
15 Light, Crescent	40.00
17 Light, Single Heart	40.00
18 Light, Double Heart	40.00

Note: Add Silk Arrangements to your Candelabras.

Ask your consultant.

Ask About Our

**Beautiful Bridal
Packages**

**We Have Created
With You In Mind**

**For Your
Special Day**



(Photo Album Available)

☆ Equipment Rental Distributor ☆

**American
Rent-all**

www.americanrent-all.com

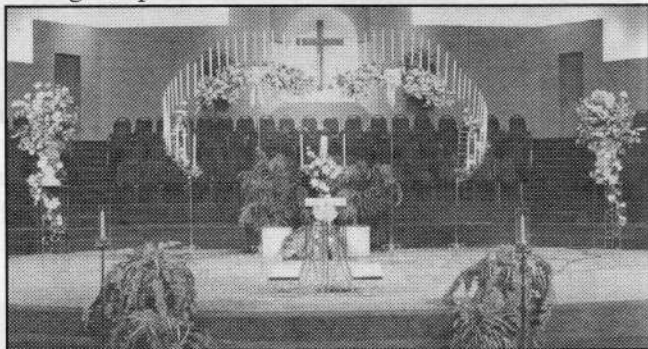
**20934 I-45 North Freeway
Spring, TX 77373**

281-651-6666

CANDELABRAS CONTINUED

SILVER

Candles Dripless Mechanical 15" & 8"	1.00 ea.
1 Light, Aisle Marker, Clip on	10.50
1 Light, Aisle Marker, Self Standing	10.50
3 Light, Unity (Customer to purchase Unity Candle)	15.00
15 Light, Crescent (Center Fan)	40.00
15 Light, Spiral	40.00
31 Light, 3 pc. Heart Set	65.00
9 Light, Heart Center Fan	25.00
11 Light, Spiral	30.00



WHITE

3 Light, Unity (Customer to purchase Unity Candle)	15.00
15 Light, Crescent (Center Fan)	40.00
15 Light, Spiral	40.00



BROWN WROUGHT IRON

3 Light, Unity (Customer to purchase Unity Candle)	15.00
5 Light Branch	25.00
5 Light Pillar	25.00

ARCHES

SILVER

Metal	35.00
Metal w/Extensions	40.00
Metal w/Double Heart w/Columns	50.00

BRASS

Metal	35.00
Metal w/Extensions	40.00
Metal Heart	40.00

WHITE

Metal	35.00
Wicker Heart	40.00
Wrought Iron Heart w/Fence	45.00

BROWN

Wrought Iron	35.00
Wrought Iron w/Extension	40.00

Note: See Silk Arrangements for complete Arch Decorating.



GAZEBOS

Wrought Iron 8' x 8' Round	145.00
White Wicker 10' x 10' Round	100.00
Gazebo Set-up	30.00



ROMAN COLUMNS

7' Double Roman Columns w/Top & Bottom	75.00
7' (4) Column Quarter Circle w/Arch Pediment	150.00
7' (4) Column Square w/Arch Pediment	190.00
7' (4) Column Quarter Circle w/Top Pediment	190.00
7' (6) Column Oval Colonnade w/Arch Pediment ...	295.00

(As seen in picture)

MISCELLANEOUS

Large Urn	15.00
Balustrade (3 Post Fence)	12.50
Lighted Base	12.50

INDIVIDUAL COLUMNS

24"	8.00
32"	9.00
42"	10.00
53"	20.00
56"	15.00
72"	18.00
76"	25.00
96"	25.00

Note: Ask about our Specially Packaged Prices w/ Floral Arrangements (Absolutely beautiful)

Pictures are available.

REGISTRY STANDS

White Wicker	15.00
White Wrought Iron	15.00
Brass w/Wood Top	15.00
Silver w/Plastic Top	15.00

PLANT OR FLORAL STANDS

White Wicker 45" Floor Length	10.00
White Wicker 40" Floor Length	10.00
Brass 38"	10.00
Silver 38"	10.00
White Urns (Variety)	5.00-25.00



FLORAL / SILK ARRANGEMENTS & TREES

SMALL CANDELABRA DECORATIONS

White w/Greenery Floral Swag	
(on Crescent)	15.00
White w/Greenery Floral	
(on Spiral)	15.00
Ivory w/Greenery Floral Swag	
(on Crescent)	15.00
Ivory w/Greenery Floral	
(on Spiral)	15.00
Greenery only	15.00
* Bows (Extra Charge)	9.00 ea

SMALL ARRANGEMENTS

Wisteria (ind. bunches) Ivory or White	4.00 ea
Ferns w/White Urns	15.00
White w/Greenery Floral Arrangement	
in Small Urn	20.00
Ivory w/Greenery Floral Arrangement	
in Small Urn	20.00

FLORAL / SILK ARRANGEMENTS & TREES CONTINUED

MEDIUM ARRANGEMENTS

- White w/Greenery Floral Arrangement in containers
(Silver, Brass, White Wicker Base) 25.00
- Ivory w/Greenery Floral Arrangement in containers
(Silver, Brass, White Wicker Base) 25.00
- Ferns w/White Urns 25.00

MEDIUM TREES

- Silk Ficus 25.00

LARGE ARRANGEMENTS

- White w/Greenery Floral Arrangement
(in White Urn) 30.00
- Ivory w/Greenery Floral Arrangement
(in White Urn) 30.00
- White w/Greenery Floral Design
Arches completely decorated 30.00
- Ivory w/Greenery Floral Design
Arches completely decorated 30.00
- Greenery Only on Arches 30.00
- Ferns w/White Urns 30.00

WEDDING ACCESSORIES

- Candle Lighters / Snuffers (Silver or Brass) 8.00
- Chimney Glass Globes (When Separate) 3.00
- Paradise Dripless Mechanical Candle 15" 1.00
- Paradise Dripless Mechanical Candle 8" 1.00
- Recirculating Fountain, White 37" x 48" 40.00
- Easels, Starting at 10.00
- Wishing Wells (Ivory or White) 15.00
- Wrought Iron White Gift / Cake Cart
on Wheels 25.00

KNEELING BENCHES

- Pair, Brass 25.00
- Pair, Silver 25.00

LATTICE, BACK DROP

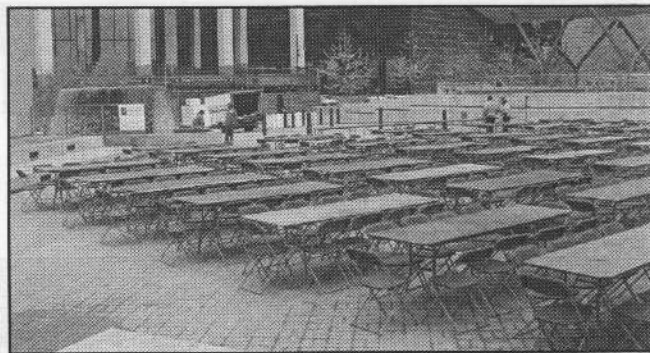
- Tri-fold (6' x 2') 20.00
 - Tri-fold (7' x 2') 20.00
 - Tri-fold Center Rd. (7' x 8') 25.00
 - 3 pc. 2 Tri-fold & Tri-fold Center Rd. 60.00
- (As seen in picture below)*



CENTERPIECES

- Mirrors 12" x 12" Squares99
 - Mirrors 14" x 14" Octagon 2.00
 - Hurricane Globe w/Floral-Greenery on Mirror 8.50
 - Wrought Iron Holder 5.00
 - Silver, 3 Light Floating Candle 38" tall 12.00
- (Customer to purchase floating candles)*
- 5 Light Candelabra Table Top 12.00
 - Rose Topiaries w/Silver Vase 22.00





TABLES & CHAIRS

BANQUET (RECTANGULAR) TABLES

30" Square (Card Table)	7.00
30" x 72" (6') Seats 6-8	8.00
30" x 96" (8') Seats 8-10	8.75
30" x 72" (6') Children's Table	9.00
66" x 28" Serpentine Table	10.00

ROUND TABLES

30" Cocktail	13.50
36" (3') Seats 2-4	7.00
48" (4') Seats 5-6	8.50
60" (5') Seats 8-10	10.00

Set-up & Breakdown for all tables (each way) 1.00 ea.

CHAIRS (FOLDING)

Brown Samsonite Plastic / Metal Frame99
Black Samsonite Plastic / Metal Frame	1.35
White Samsonite Plastic / Metal Frame Indoor ...	1.35
White Samsonite Plastic / Metal Frame Outdoor	1.35
White Padded Resin	2.50
Children's Chairs	1.25
Chair Covers w/Sash (See Linens)	3.25 ea.

Set-up & Breakdown for chairs (each way)25 ea.

PORTABLE BARS

Black Formica 6' w/Skirting	60.00
Wood Top w/6' Table & Skirting	60.00



TABLE LINENS, SKIRTING & CHAIR COVERS

BANQUET

60" x 120" (6' or 8' Tables)	12.00
90" X 156" (6' or 8' Tables to the Floor).....	18.00

ROUND

72" (3' or 36" Tables)	10.00
90" (4' or 5' Tables)	12.00
120" (5' to the floor)	18.00

SQUARE

60" x 60"	10.00
90" x 90"	10.00

NAPKINS

20" x 20"60
-----------------	-----

SKIRTING (POLY / COTTON / PLEATED)

8' Section (1.55 per foot)	12.40
13' Section (1.55 per foot)	20.15

SKIRTING (LACE W/VALANCE)

8' Section (1.65 per foot)	13.20
13' Section (1.65 per foot)	21.45

* Speciality Linens upon request

* Linens available in colors

Chair Covers (Poly Cotton w/Sash)	3.25ea.
---	---------

Set-up for Linens

Table	1.00 ea.
Skirting	5.00 ea.

Note: Please do NOT put in plastic bags over 24 hr. period. Linens *will* mildew.

DINNERWARE

WHITE CHINA

Dinner Plate (10 1/2")	.55
Salad / Dessert Plate (7 1/2")	.55
Bread & Butter Plate (6")	.55
Saucer	.55
Coffee Cup	.55

GLASS DINNERWARE

Plates, Glass Salad / Dessert (8")	.45
------------------------------------	-----

GLASSWARE

Punch Cups	.30
10 oz. Wine/Multipurpose	.45
High Balls 10 oz. Tall Collins	.45
12 1/2 oz. Beer/Multipurpose	.50
Goblet, Multipurpose	.50
Champagne Flutes, Martini, Highball	.60
Champagne Tulips (9 oz.)	.60

STAINLESS FLATWARE

FORKS

Dinner	.50
Salad / Dessert	.50

SPOONS

Teaspoon	.50
Sugar	.50

KNIVES

Dinner	.50
Bridal	2.00
Pie or Cake Server	2.00

TRAYS

STAINLESS STEEL ROUND DECORATED

12"	8.00
16"	9.00
18"	10.00

STAINLESS STEEL OVAL

11 1/2" x 16"	9.50
---------------	------

CAKE TRAYS / STANDS

Silver Plated, Decorative 16" Round	30.00
Silver Plated, Decorative 16" Square	30.00
Silver Plated, Decorative 22" Round	40.00
Silver Plated, Decorative 17" Square	40.00
Cake Fountain, Plastic 3-Tier	10.00

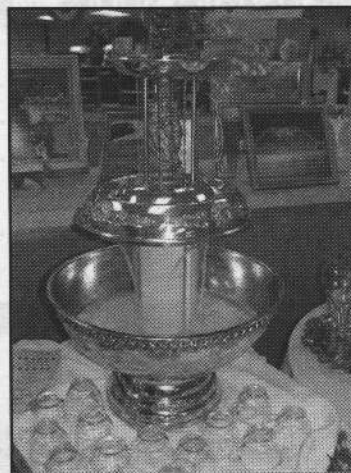
MISCELLANEOUS / SERVING UTENSILS

STAINLESS STEEL

Long Handled Serving Spoon or Fork	1.00
Salad Tongs (Sm. or Lg.)	1.00
Meat Fork	1.00
Table Spoon	1.00
Cake Server	2.00
Cake Knife	2.00
Punch Ladles	3.00

Note: All China, Flatware, Silver must be returned

BEVERAGE SERVICE



FOUNTAINS

(TABLE TOP) CHAMPAGNE / PUNCH

5 Gal. Gold Aluminum Finish	40.00
5 Gal. Decorative w/Gold & Silver (Mirror Finish)	50.00
5 Gal. Decorative Silver (w/Mirror Finish)	50.00

**BEVERAGE SERVICE
CONTINUED**

PUNCH BOWLS

3 Gal. Cut Glass w/Ladle	20.00
3 Gal. Silver w/Ladle	20.00

COFFEE / TEA MAKER

55 Cup Faberware	20.00
100 cup	18.00

**MISCELLANEOUS BEVERAGE
SERVICE**

5 Gal. Thermovat - Hot / Cold	15.00
Champagne Bucket - Silver w/Silver Stand	10.00
Ice Chest - Large (110 Qt.)	11.00

FOOD WARMERS

Chafer Round Decorative Stainless w/Gold ..	15.50
Chafer Rectangle (8 qt.)	
Decorative Stainless w/Gold	22.00
Decorative Lafayette	22.00
Stainless	20.00
Food Warmer Electrical (4) 8 qts. in one unit ..	95.00
Extra Food Pans - Various Sizes	2.50
Thermal Food Pan Carrier w/Dolly	22.00



**MISCELLANEOUS HEATING
& COOKING EQUIPMENT**

Hot Plates w/2 Burners - Electric	7.50
Roaster Oven - Electric	18.00
Heat Lamps	18.00
Meat Slicer	35.00
Portable Propane Burners (Propane included)	
Single	30.00
Double	35.00
Stock Pots	
60 qt.	15.00
40 qt.	12.00
Stock Pot Baskets	5.00

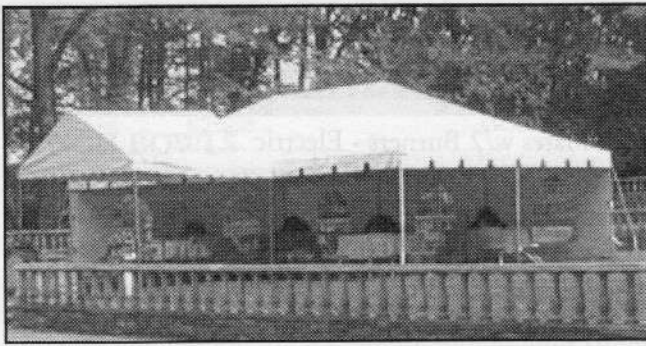


Call Today

***If You
Need It?***

***We Will
Rent It!***





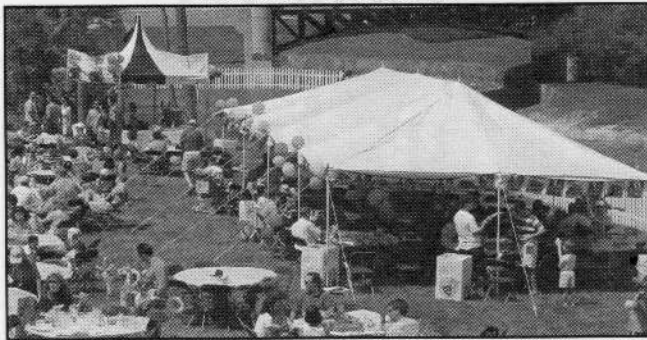
CANOPIES & TENTS

FRAMED TENTS

10' x 10'	160.00
10' x 20'	240.00
10' x 30'	320.00
10' x 40'	400.00
20' x 20'	300.00
20' x 30'	400.00
20' x 40'	500.00
20' x 50'	600.00
20' x 60'	700.00
40' x 40'	1125.00
40' x 50'	1325.00
40' x 60'	1485.00

Prices includes installation *Delivery Extra*

Must be delivered



POLE TENTS

20' x 20'	200.00
20' x 30'	285.00



SIDE WALLS

Solid	20.00
Window - French	30.00

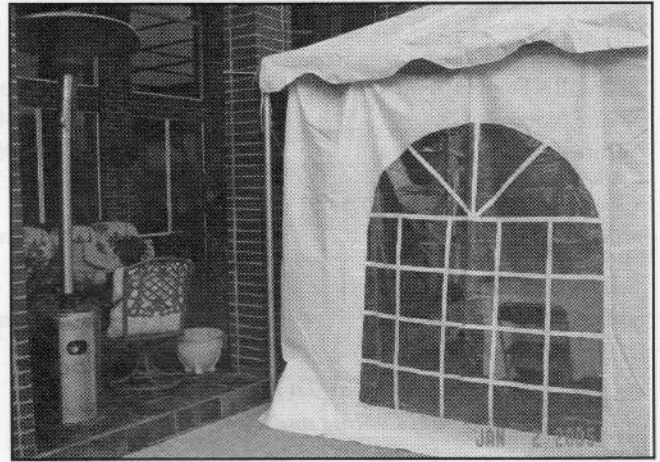
TENT LIGHTING

Lights on Strand (6 lights per string)	25.00
--	-------

TENT HEATERS & COOLERS

Patio	90.00
Port A Cools (Fans)	150.00

*If you have any questions please consult with our
Event Specialist*



Number of People

TENT SEATING AND CAPACITY PLANNER

Size	Sq. Foot	Stand-up Cocktail	Buffet Dinner	Sit Down Dinner
FRAMED				
10'x10'	100	16 - 20	12 - 14	10
10'x20'	200	35 - 40	15 - 20	15
10'x30'	300	45 - 50	20 - 25	20
10'x40'	400	55 - 60	30 - 35	30
20'x20'	400	65 - 80	50 - 55	40
20'x30'	600	85 - 120	75 - 85	60
20'x40'	800	130 - 160	100 - 115	80
20'x50'	1000	170 - 200	110 - 135	100
20'x60'	1200	210 - 240	130 - 155	120
40'x40'	1600	256 - 320	188 - 213	133
40'x50'	2000	320 - 400	242 - 266	166
40'x60'	2400	384 - 480	282 - 320	200
POLE				
20'x20'	400	65 - 80	50 - 55	40
20'x30'	600	75 - 85	65 - 75	45

All Tents are White

Additional Areas to allow for:

Bar Area	100 sq. ft.
Dance Area	2 - 4 sq. ft.
Buffet Area per table	100 sq. ft.

Delivery and Set-up Charges not included

Miscellaneous:

Sidewall - Framed Tents Only	per foot
White Sidewall	1.00
White w/French Window	3.00

Concrete Set-up (Water on Site)
w/Water Barrels See Consultant

Set-up on Grass or Dirt
w/Stakes See Consultant

*Consult your Tent Specialist
We offer A/C Cooling and Heating for Tents*

DANCE FLOOR, STAGING & ACCESORIES

Dance Floor 3' x 3' Sections.....	16.00
Staging 4' x 4' x 16" H Section	35.00
Staging 6' x 8' x 16" H.....	65.00
Platform Steps 8"H x 2'L	10.00
Ultra Stairs.....	55.00
Stage Skirting per ft.	1.25
Astroturf per sq. ft.	0.50
Stage Carpeting (Call Consultant)	

*3' x 3' Indoor / Outdoor
Parquet Dance Floor Sections
9 sq. ft. per couple*

		Dance Floor Length				
		3'	6'	9'	12'	15'
Dance Floor Width	3'	2	4	6	8	10
	6'	4	8	12	16	20
	9'	6	12	18	24	30
	12'	8	16	24	32	40
	15'	10	20	30	40	50
		Number of People				

		4X4 Stage Sections				
		4	8	12	16	20
Stage Width	4	1	2	3	4	5
	8	2	4	6	8	10
	12	3	6	9	12	15
	16	4	8	12	16	20
	20	5	10	15	20	25
		Number of People				

EQUIPMENT

AUDIO / VISUAL

Overhead Projector	25.00
Screens - Projection (Size)	15.00
Floor Podium-PA System	55.00
Bullhorn Electric	12.00
Easels / Chart Holder	10.00

MISCELLANEOUS

Garment Rack	15.00
Coolers (Porta-Cools)	150.00
Fans - 42" Box	35.00
Park Bench	55.00
Heaters - Patio Tower w/Propane	90.00
Disco Ball, Lg. w/2 Lights	35.00
Pin Lights, Colored	8.00 ea.
Raffle Drum	15.00
Hellium Tanks	
Small (Inflates 200 Balloons)	65.00
Large (Inflates 700 Balloons)	120.00

CONSESSIONS

CONSESSION EQUIPMENT

Popcorn Machine	60.00
Sno-Cone Machine	60.00
Cotton Candy Machine w/Dome	60.00
Margarita Machine - Single	110.00
Margarita Machine - Double	210.00
Hot Dog Steamer	35.00

*Margarita Machine needs
Dedicated Circuit only 15 - 20 amps*

CONSESSION SUPPLIES & MERCHANDISE

SNO-CONES

Syrup, 1 Gal. (Variety of Flavors)	10.95
(Makes approx. 110-120 sno-cones per gal.)	
Cup, 200 per box (1 Sleeve) 6 oz.	7.95
Sno-Cone Pumps, purchase	5.95
rental	2.75

MARGARITAS

Lime Aide Mix, 1/2 Gal.	15.95
(Concentrated, makes 4 gal.)	
Makes Approx. (50) 8 oz. Servings	

COTTON CANDY

Sugar Floss, 3 Lbs.	10.95
(makes approx. 60 - 70 cones)	
Bags, per 50	4.50
Cone, per 50	5.00
Cones, ea.	0.10

POPCORN

Popcorn Kits, 6 oz. (oil & salt)	1.15
(makes approx. 8 small bags)	
Bags, per 50	3.00
Bags, per 100	6.00
Bags, ea.	0.08
Popcorn, Case (6 oz. Kits) Mix	43.50
(36 to case)	

PLASTIC TABLE COVERS (Variety of Colors)

54" x 108" Rectangular	2.99
82" Round	3.99
100' Rolls	24.99

AISLE RUNNERS

75' Disposable	21.99
----------------------	-------

WEDDING

Unity Candles, Decorative	19.99 -29.99
Bubbles	doz. 4.99
Bubble Fluid, 1 qt.	11.00
Fog Fluid.....	19.99
Sterno, extra.....	1.00 ea.
Candles 15".....	25.00 pr.
Candles 8".....	19.99 pr.

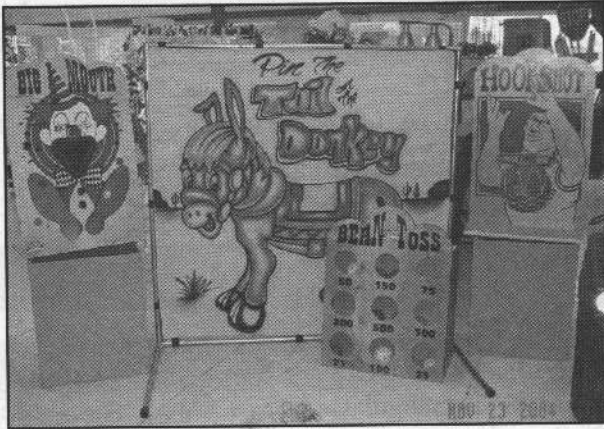
MISCELLANEOUS PARTY & CARNIVAL EQUIPMENT

MOONWALKS

Castles 15' x 15'	95.00
Monster Truck	135.00
Pink Castle	135.00
Obstacle Course	200.00
Slip-n-slide.....	200.00
3 in 1 Climb, Jump, Slide	225.00

MACHINES

Bubble	30.00
Karaoke w/CDs	65.00
Fog	35.00

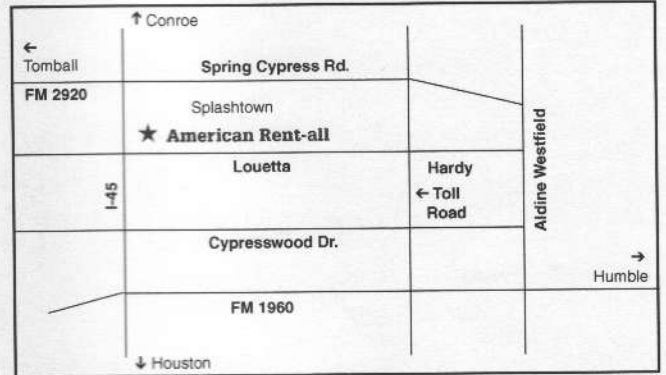


CARNIVAL GAMES

Pin the Tail on the Donkey, 4' tall	45.00
Feed the Monkey, 7' tall	45.00
Golf Challenge, 7' tall	45.00
Big Mouth, Table Top Game	25.00
Tic Tac Toe, Table Top Game	25.00
Basketball, Table Top Game	25.00
Bean Toss	25.00
Dunk Tank, Tow Behind	135.00



American Rent-all



20934 I-45 North
Spring, Texas 77373

(next to Splashtown)

Showroom 281-651-6666

Fax 281-288-3923

*Come visit our showroom to see the
many items we have to offer!*